

imageCLASS

LBP352dn / LBP351dn

Duplex, Laser Printers

REVOLUTIONIZE TODAY'S WORKSPACE

- Lightning-fast, exceptional, black-and-white laser output and prints at speeds of up to 65 pages per minute* (LBP352dn) and 58 pages per minute* (LBP351dn), with your first print in your hands in less than 8 seconds.**
- Remarkable paper handling in an expandable, configurable construction, with multiple optional accessories **available to support paper feeding up to 3,600 sheets.*****
- Supports UFR II, PCL 6, Adobe® PostScript®, and XPS printer languages, **allowing greater versatility for your printing needs.**
- Print on-the-go with **Canon PRINT Business**,[†] **Apple® AirPrint®**,^{††} **Mopria™ Print Service**,^{†††} and **Google Cloud Print™**[▲] using your compatible mobile device.
- With **USB Direct Print**, you can easily print from your USB Flash drive in JPEG, TIFF, PDF, and XPS formats.
- Password-protected **Department ID Management** helps business owners monitor and manage device usage for up to 300 IDs.
- **Low energy consumption**; uses just 2 watts or less in Energy Saver Mode.
- **Eco-friendly**, automatic duplexing right out of the box saves on paper and related costs.
- The single-cartridge system combines the toner and drum into one unit, **making cartridge replacement simple.**



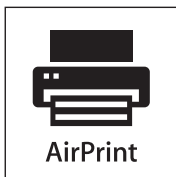
ADVANCED TECHNOLOGIES FOR YOUR OFFICE

Speed and Versatility

The LBP350 Series delivers high-speed output at 65 ppm* (LBP352dn) and 58 ppm* (LBP351dn) to keep your business running. This Series offers high-capacity, generous paper feeding in a variety of configurations with a maximum 3,600-sheet*** capacity. With a monthly duty cycle of up to 280,000 sheets,*** the LBP350 Series is designed to meet your high-volume print demands, making it an ideal solution for your business.

Print On-the-Go

Print a variety of file types, Web pages, and images on-the-go with **Canon PRINT Business**,[†] **Apple® AirPrint®**,^{††} **Mopria™ Print Service**,^{†††} and **Google Cloud Print™**[▲] using your compatible mobile device. For more information on Canon supported apps and compatibility, please visit <https://www.usa.canon.com/mobile-app>.



Service and Support

At its foundation, Canon has an uncompromising dedication to product reliability, service, and support. From cutting-edge technology to industry-leading response times, Canon U.S.A. takes pride in delivering complete customer satisfaction. Canon's award-winning, 100% U.S.-based, friendly, and knowledgeable Customer Service Team provides expert assistance for every level of experience.

High-Capacity Cartridge

Canon's GENUINE toner is designed to help improve image processing and precise character printing as well as overall image quality. The Single-Cartridge System combines the toner and drum into the same unit, which means you only have one consumable to replace. Designed by Canon engineers and manufactured in Canon facilities, GENUINE supplies are developed using precise specifications, so you can be confident that your Canon device will produce high-quality results consistently. The LBP350 Series offers standard Cartridge 039 Black (11,000-page yield) and Cartridge 039 Hi-Capacity Black (25,000-page yield) options, offering exceptional toner yield to support high-volume printing.

* Print speed is based on internal testing. Print speed may vary depending on the number of copies selected as well as on the settings for size, type, and orientation of paper.

** May vary depending on the output environment.

*** Based on 20 lb. Bond paper.

[†] Canon PRINT Business is a new app, available free on the App Store™ and Google Play Store; compatible with iPhone 6 Plus, iPhone 6, iPhone 5S, iPhone 5C, iPhone 5, iPhone 4S, iPhone 4, iPad Air 2, iPad Air, iPad 4, iPad 3, iPad 2, Original iPad, iPad mini, iPad mini Retina, iPad mini 3 running iOS 7.0 - 8.0. Supports Android Tablets and Phones running OS 4.0 - 5.0. Canon PRINT Business combines the functions of Canon Mobile Printing and Canon Mobile Scanning for Business apps into one, streamlining both apps and adds new features and functionality for users of all types, from small or home offices to large enterprise offices. Users of Canon Mobile Printing can simply update the app to use Canon PRINT Business. Users who have installed Canon Mobile Scanning for Business should install Canon PRINT Business. After Canon PRINT Business is installed, users can reregister their Canon Mobile Scanning for Business device list and local documents.

^{††} Apple AirPrint functionality requires an iPad, iPad Mini, iPad 2, the new iPad, iPhone 3GS or later, or iPod touch 3rd generation or later device running iOS 7.0 - 8.0 or later, and an AirPrint-enabled printer connected to the same network as your iOS device. A printer connected to the USB port of your Mac, PC, AirPort Base Station, or Time Capsule is not supported.

^{†††} Mopria Print Service, available free at the Google Play Store, requires a compatible Android 4.0 or later smartphone or tablet. The printer must be either wirelessly connected to the network router or with an Ethernet cable. The mobile device and printer must be connected to the same network.

[▲] Google Cloud Print requires an Internet connection and Google Account. Printer firmware update may be necessary for Google Cloud Print™ function. Certain exceptions may apply. A PC running Windows XP or later or a Mac running OS 10.4.11 or later and USB cable are required to perform firmware update.

CONFIGURATIONS

Desktop Configurations

These configurations may be used as desktop machines, depending on the desk height you have available.



Standard Printer Configuration

Main Unit: 17.3"
Total: 17.3"



Printer with One Cassette Option

Main Unit: 17.3"
Paper Feeder PF-B1: 4.8"
Total: 22.1"

Options

(Can be added to any configuration)

- Envelope Feeder



- Custom Media Cassette



NOTE: Optional Custom Media Cassette can only be inserted into the standard cassette cavity and will work in place of the standard cassette to accommodate small media sizes (4" x 5.8" to 6.7" x 11.1").

Floor (with Cabinet)

These configurations are ideal for use as floor-standing machines. Use of stand or cabinet is strongly recommended. This allows free access to the bottom Paper Feeder or Paper Deck while also making it easy to turn or move the device for maintenance. The Cabinet can also store paper and consumables.



Printer with One Cassette and Cabinet Options

Main Unit: 17.3"
Paper Feeder PF-B1: 4.8"
Cabinet Type-T1: 17.3"
Total: 39.4"



Printer with Two Cassettes and Cabinet Options

Main Unit: 17.3"
Paper Feeder PF-B1: 4.8"
Paper Feeder PF-B1: 4.8"
Cabinet Type-T1: 17.3"
Total: 44.2"

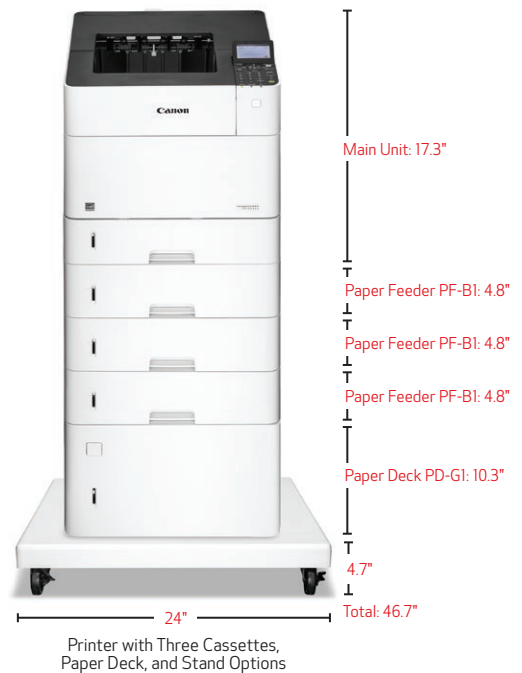
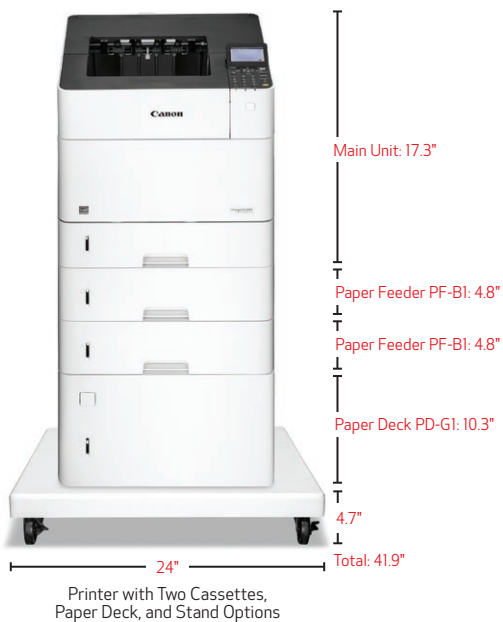
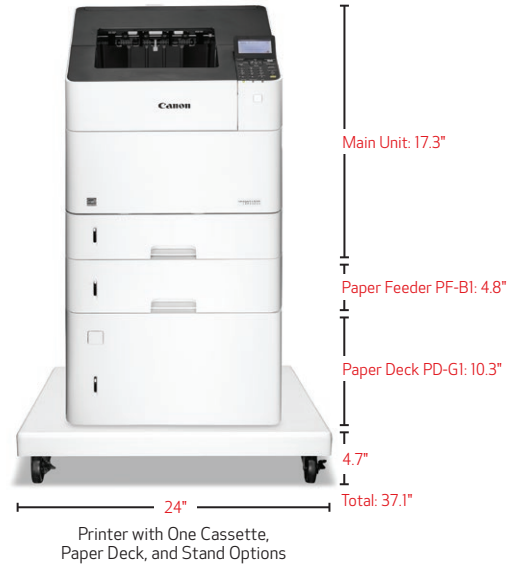
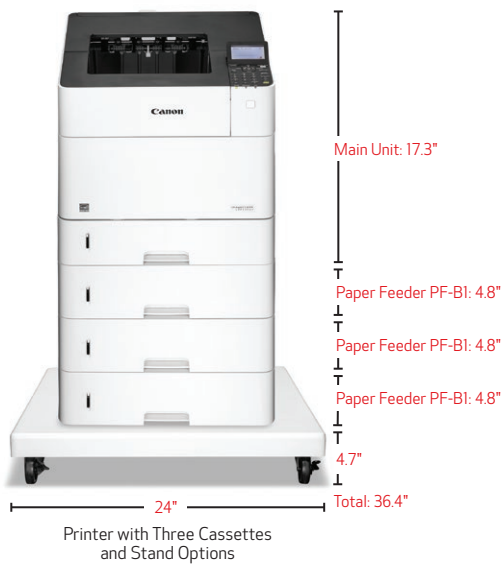


Printer with One Cassette, Paper Deck, and Cabinet Options

Main Unit: 17.3"
Paper Feeder PF-B1: 4.8"
Paper Deck PD-G1: 10.3"
Cabinet Type-T1: 17.3"
Total: 49.7"

Floor (with Stand)

These configurations are ideal for use as floor-standing machines. Use of stand or cabinet is strongly recommended. This allows free access to the bottom Paper Feeder or Paper Deck while also making it easy to turn or move the device for maintenance.



FEATURES	imageCLASS LBP352dn	imageCLASS LBP351dn
BASIC SPECIFICATIONS		
Functions	Print	
Replaces	NEW	
Print Speeds (default print mode: 2-sided)	Up to 65 ppm* (1-sided, plain paper letter), Up to 43.5 ppm* (2-sided, plain paper letter)	Up to 58 ppm* (1-sided, plain paper letter), Up to 38.5 ppm* (2-sided, plain paper letter)
Connectivity	USB Device High-Speed 2.0, Shared 10/100/1000Base-T Ethernet (Network)	
Operating Systems	Windows® 10/8.1/8.7, Vista®, Windows Server® 2012 R2/2012/2008 R2/2008/2003 R2/2003; Mac OS 10.5.8 and Up, Drivers Available For Download From www.usa.canon.com/support	
PAPER HANDLING		
Paper Capacity	Up to 3,600 Sheets***	
Standard Cassette	500 Sheets; 16 to 32 lb. Bond (plain paper); Letter, Legal, A4, A5,▲▲ B5, Statement, Executive (Min: 5.82" x 8.26"/Max: 8.5" x 14")	
Multipurpose Tray	100 Sheets; 16 to 53 lb. Bond (plain paper); Letter, Legal, A4, A5,▲▲ B5, Statement, Executive (Min: 3" x 5"/Max: 8.5" x 14")	
Optional Paper Accessories	500-Sheet Cassette; 16 to 32 lb. Bond (plain paper); Letter, Legal, A4, A5,▲▲ B5, Executive (Min: 5.82" x 8.26"/Max: 8.5" x 14") 500-Sheet Custom Media Cassette; 16 to 32 lb. Bond (plain paper); (Min: 4 x 5.82"/Max: 6.7" x 11.1") 1,500-Sheet Paper Deck; 16 to 32 lb. Bond (plain paper); A4, Legal, Letter 75-Sheet Envelope Feeder (Envelopes: COM10, Monarch, C5, DL)	
Output Tray	Approx. 500 Sheets (face-down)	
Duplex	Yes	
Duty Cycle	Up to 280,000 Pages Per Month	Up to 250,000 Pages Per Month
Security	IEEE 802.1x, SNMPv1, SNMPv3	
PRINTER SPECIFICATIONS		
First-Print Time	7 Seconds or Less (Letter)**	7.2 Seconds or Less (Letter)**
Printer Language	UFR II, PCL 5c/e, PCL 6, Adobe® PostScript®, PDF, XPS	
Print Resolution	Up to 600 x 600 dpi; 1200 x 1200 dpi Quality	
Print Features	Toner Saver, Poster, Booklet, Watermark, Collate	
Print Memory	1 GB	
Mobile Print	Canon PRINT Business,† Apple® AirPrint®,†† Mopria™ Print Service,††† Google Cloud Print™▲	
GENERAL SPECIFICATIONS		
Dimensions (machine only)	16.4" (W) x 20.9" (D) x 17.3" (H)	
Weight (without/with cartridge)	54 lb./57.8 lb.	
Weight	67.3 lb.	
Warranty	One-Year Limited Onsite (Extended Warranty available)	
ENVIRONMENTAL SPECIFICATIONS		
Typical Energy Consumption (TEC)	3.1 kWh	2.6 kWh
Power Consumption	Operation: 820 W or Less; Standby: 20 W or Less Energy Saver: 2 W or Less	Operation: 880 W or Less; Standby: 20 W or Less Energy Saver: 2 W or Less
Noise Level▲▲▲	Operation: 56 dB (sound pressure), 71 dB or Less (sound power) Standby: Inaudible (sound pressure/sound power)	Operation: 57dB (sound pressure), 71dB or Less (sound power) Standby: Inaudible (sound pressure/sound power)
ENERGY STAR®	Yes	
EPEAT	Silver	
WHAT COMES IN THE BOX		
	LBP350 Product, Standard Cartridge 039, Power Cord (USB not included), Duplex Unit, Starter Guide, User Software DVD-ROM, Warranty Card, Canon Drivers	

* Print speed is based on internal testing. Print speed may vary depending on the number of copies selected as well as on the settings for size, type, and orientation of paper.

** May vary depending on the output environment.

*** Based on 20 lb. Bond paper.

† Canon PRINT Business is a new app, available free on the App Store™ and Google Play Store; compatible with iPhone 6 Plus, iPhone 6, iPhone 5S, iPhone 5C, iPhone 5, iPhone 4S, iPhone 4, iPad Air 2, iPad Air, iPad 4, iPad 3, iPad 2, Original iPad, iPad mini, iPad mini Retina, iPad mini 3 running iOS 7.0 - 8.0. Supports Android Tablets and Phones running OS 4.0 - 5.0. Canon PRINT Business combines the functions of Canon Mobile Printing and Canon Mobile Scanning for Business apps into one, streamlining both apps and adds new features and functionality for users of all types, from small or home offices to large enterprise offices. Users of Canon Mobile Printing can simply update the app to use Canon PRINT Business. Users who have installed Canon Mobile Scanning for Business should install Canon PRINT Business. After Canon PRINT Business is installed, users can re-register their Canon Mobile Scanning for Business device list and local documents.

†† Apple AirPrint functionality requires an iPad, iPad Mini, iPad 2, the new iPad, iPhone 3GS or later, or iPod touch 3rd generation or later device running iOS 7.0 - 8.0 or later, and an AirPrint-enabled printer connected to the same network as your iOS device. A printer connected to the USB port of your Mac, PC, AirPort Base Station, or Time Capsule is not supported.

††† Mopria Print Service, available free at the Google Play Store, requires a compatible Android 4.0 or later smartphone or tablet. The printer must be either wirelessly connected to the network router or with an Ethernet cable. The mobile device and printer must be connected to the same network.

▲ Google Cloud Print requires an Internet connection and Google Account. Printer firmware update may be necessary for Google Cloud Print™ function. Certain exceptions may apply. A PC running Windows XP or later or a Mac running OS 10.4.11 or later and USB cable are required to perform firmware update.

▲▲ A5 paper is supported in Simplex mode only.

▲▲▲ Declared noise emission in accordance with ISO 9296.

imageCLASS

LBP352dn / LBP351dn



500-Sheet Output Tray

100-Sheet Multipurpose Tray



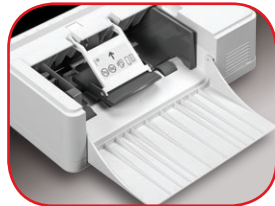
Easy, Front-Loading Cartridge System

Standard 500-Sheet Cassette

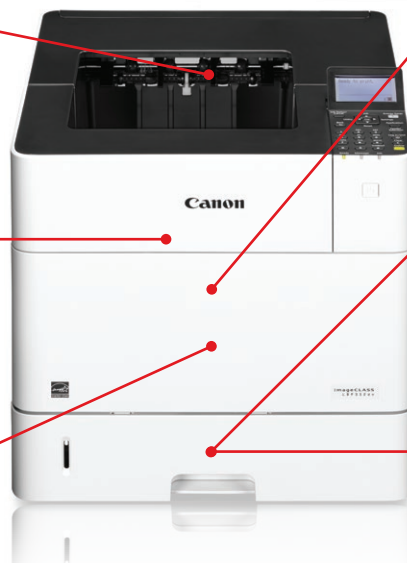


OR

Custom Media Cassette



Optional 75-Sheet Envelope Feeder*



LBP352dn shown

* Attaches via connector behind front panel.

imageCLASS LBP350 Series and Accessories

imageCLASS LBP352dn Monochrome Laser Printer	0562C007
imageCLASS LBP351dn Monochrome Laser Printer	0562C002
Cartridge 039 Black (full-yield cartridge; 11,000 pages; ISO/IEC Standard)	0287C001
Cartridge 039 High Black (full-yield cartridge; 25,000 pages; ISO/IEC Standard)	0288C001
PF-B1: 500-Sheet Optional Paper Cassette	0563C001
PD-G1: 1,500-Sheet Optional Paper Deck	0563C002
EF-A1: 75-Sheet Optional Envelope Feeder	0563C003
CM-A1: Optional Custom Media Cassette	0563C005
Cabinet Type-T1 (Optional)	5858A006
Stand Type-T (Optional)	5858A007
User Maintenance Kit-A1	0563C008

LBP352dn, On-Site Service eCarePAKs

Tier 30 One-Year eCarePAK	5707B062
Tier 30 Two-Year eCarePAK	5707B063
Tier 30 Three-Year eCarePAK	5707B064
Tier 30 Four-Year eCarePAK	5707B065

LBP351dn, On-Site Service eCarePAKs

Tier 20 One-Year eCarePAK	5707B058
Tier 20 Two-Year eCarePAK	5707B059
Tier 20 Three-Year eCarePAK	5707B060
Tier 20 Four-Year eCarePAK	5707B061

USA.CANON.COM/IMAGECLASS



As an ENERGY STAR partner, Canon U.S.A., Inc. has qualified these models as meeting the ENERGY STAR energy efficiency criteria through an EPA recognized certification body. ENERGY STAR and the ENERGY STAR mark are registered U.S. marks. Android is a trademark of Google Inc. App Store is a service mark of Apple Inc. iPhone, iPad Air, iPad, iPad mini are trademarks of Apple Inc., registered in the U.S. and other countries. iOS is a trademark or registered trademark of Cisco in the United States and other countries and is used under license. Canon, imageCLASS, and the Super G3 logo are registered trademarks and the GENUINE logo is a trademark of Canon Inc. in the United States and may also be registered trademarks or trademarks in other countries. All other referenced product names and marks are trademarks of their respective owners. Specifications and availability subject to change without notice. Not responsible for typographical errors. ©2016 Canon U.S.A., Inc. All rights reserved.

0199W778
0516-LBP352/351-2M-DSP

